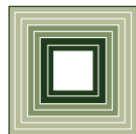


Joint Appropriations Subcommittee on
Justice and Public Safety

Department of Public Safety

State Highway Patrol State Bureau of Investigation

March 18, 2013



FISCAL RESEARCH DIVISION
A Staff Agency of the North Carolina General Assembly

JPS - DPS

Department of Public Safety (DPS)

Houses the former Departments of Crime Control and Public Safety, Juvenile Justice and Delinquency Prevention, and Correction

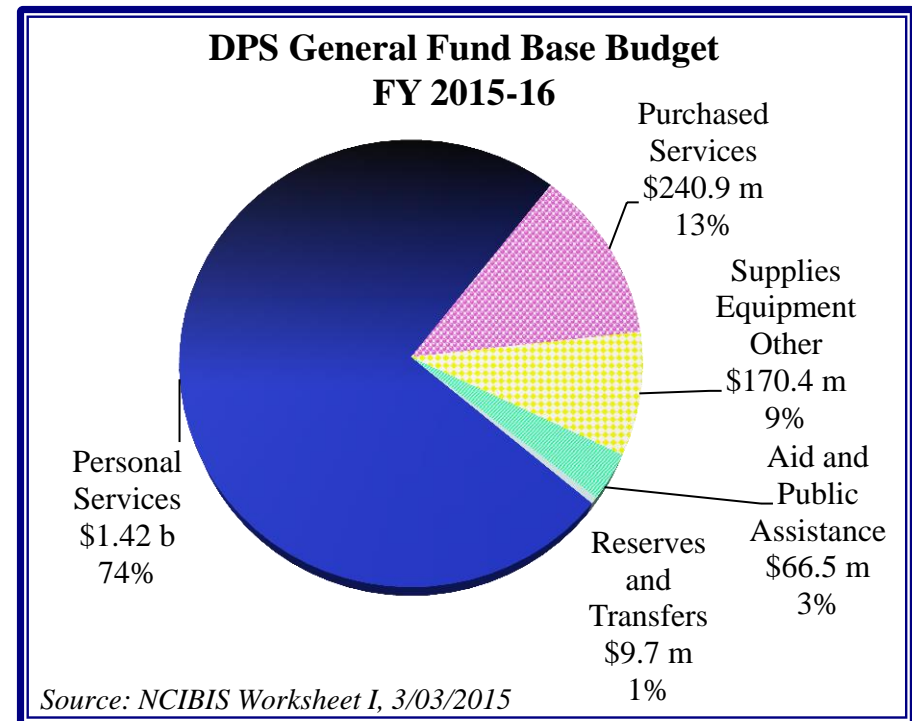
Frank Perry, Secretary

Includes:

- Prisons
- Community Corrections
- Juvenile Justice
- Highway Patrol
- State Capitol Police
- State Bureau of Investigation
- Alcohol Law Enforcement
- Emergency Management
- National Guard
- Victims Services

Total General Fund Budget: \$1.9 billion

Total FTE Employees: 24,676.45



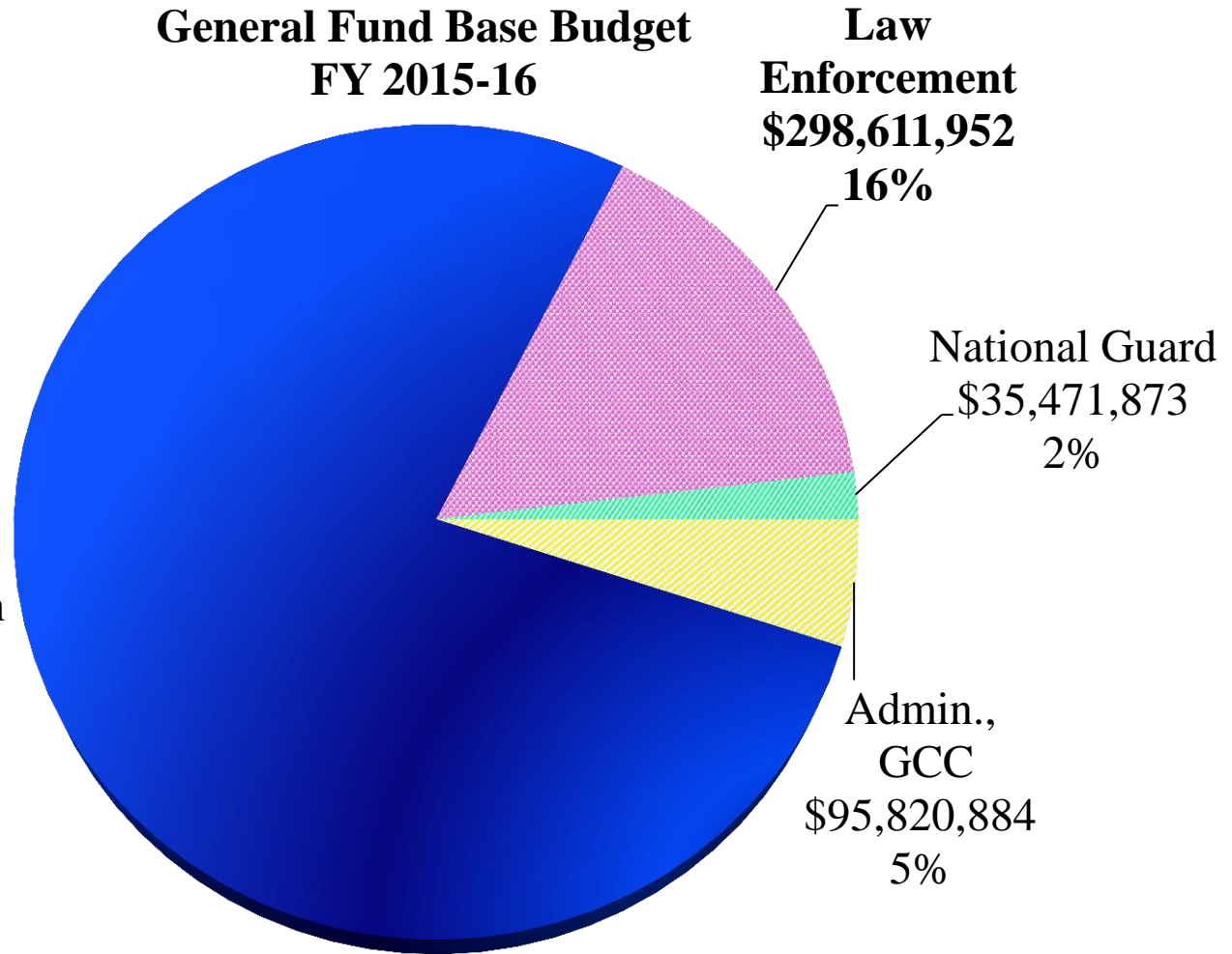
FY 2015-16 Base Budget

General Fund Base Budget FY 2015-16

Total Budget:
\$1.9 billion

Total Full-Time
Equivalent (FTE)
Employees:
24,676.45

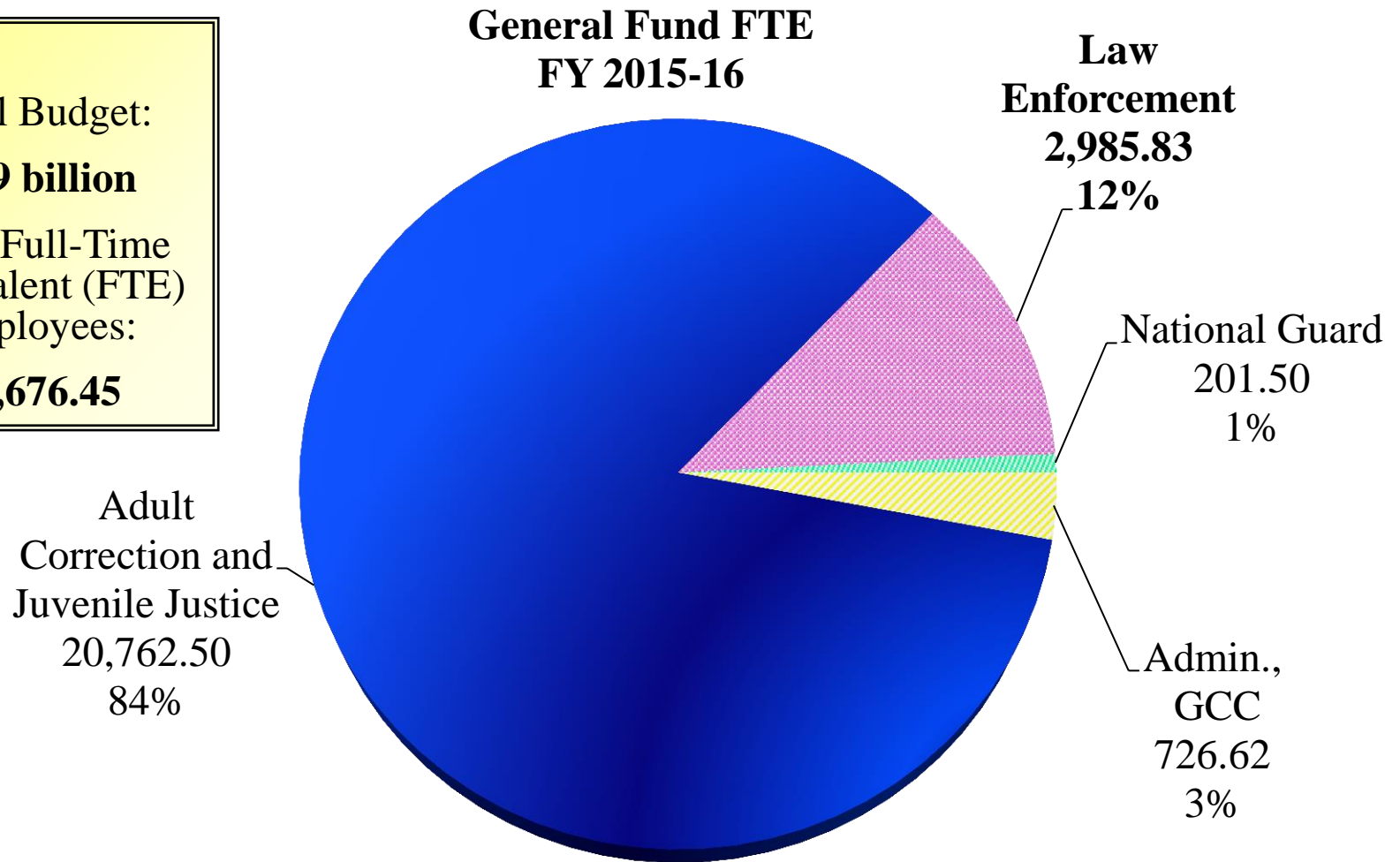
Adult Correction
and Juvenile
Justice
\$1,479,268,808
77%



Source: NCIBIS, Worksheet I, 03/03/2015

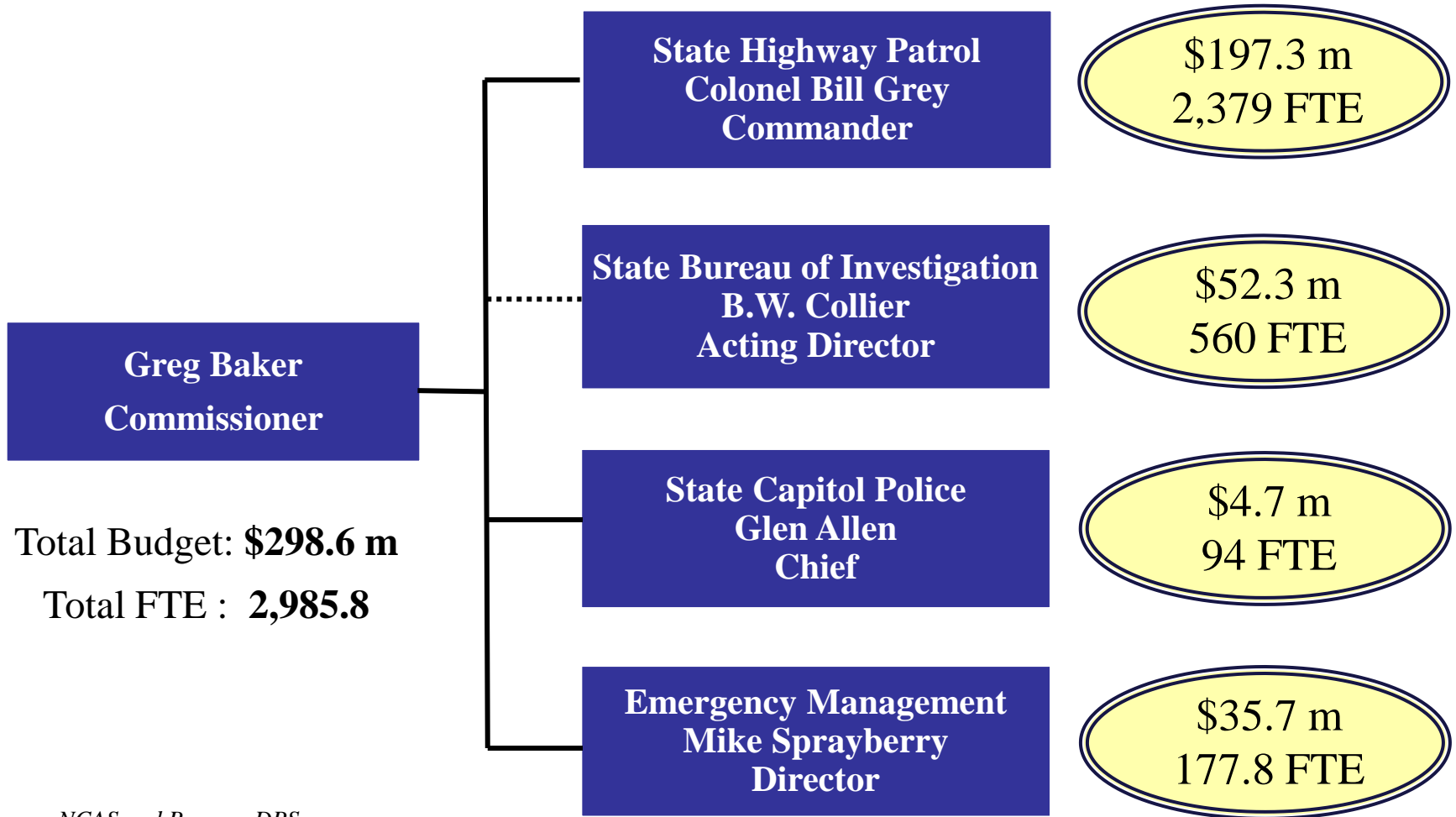
FY 2015-16 Base Budget

Total Budget:
\$1.9 billion
Total Full-Time
Equivalent (FTE)
Employees:
24,676.45



Source: NCIBIS, Worksheet I, 03/03/2015

Division of Law Enforcement



Source: NCAS and Beacon, DPS

NC State Highway Patrol

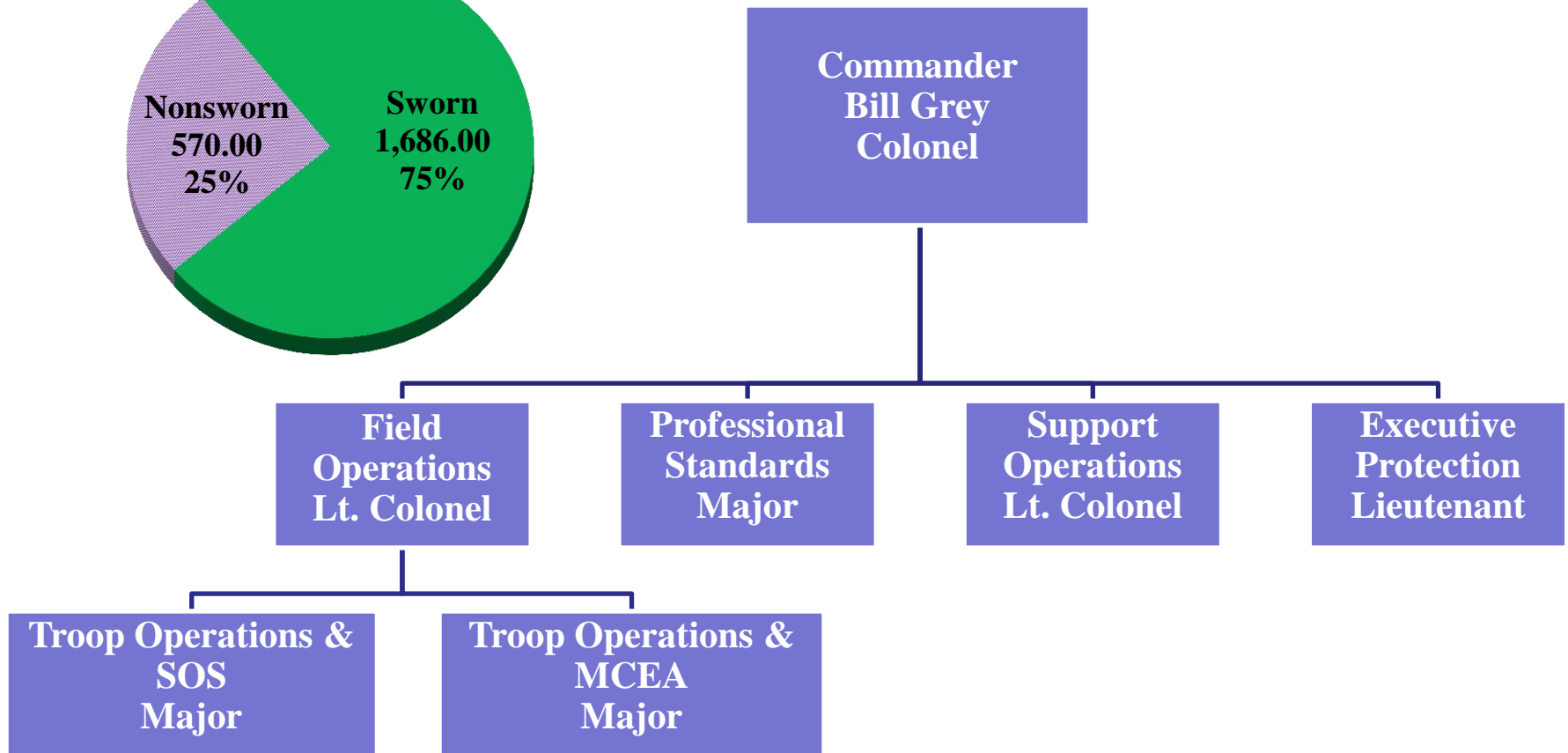
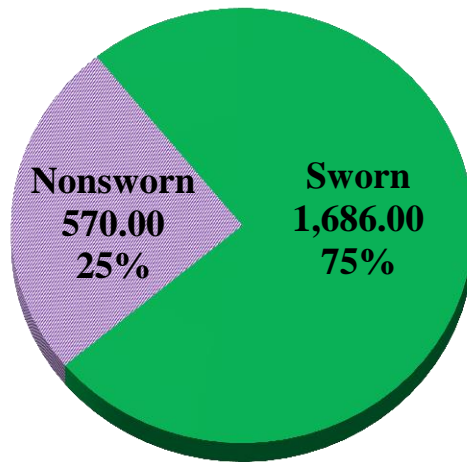
Established in 1929

G.S. 20, Article 4

Mission: To ensure safe, efficient transportation on our streets and highways, reduce crime, protect against terrorism, and respond to natural and manmade disasters.



NC State Highway Patrol



NC State Highway Patrol

Field Operations

Eight Troops divided into six to eight districts each

- Enforce traffic laws
- Investigate accidents and assist motorists
- Provide traffic safety information
- Commercial Vehicle Enforcement

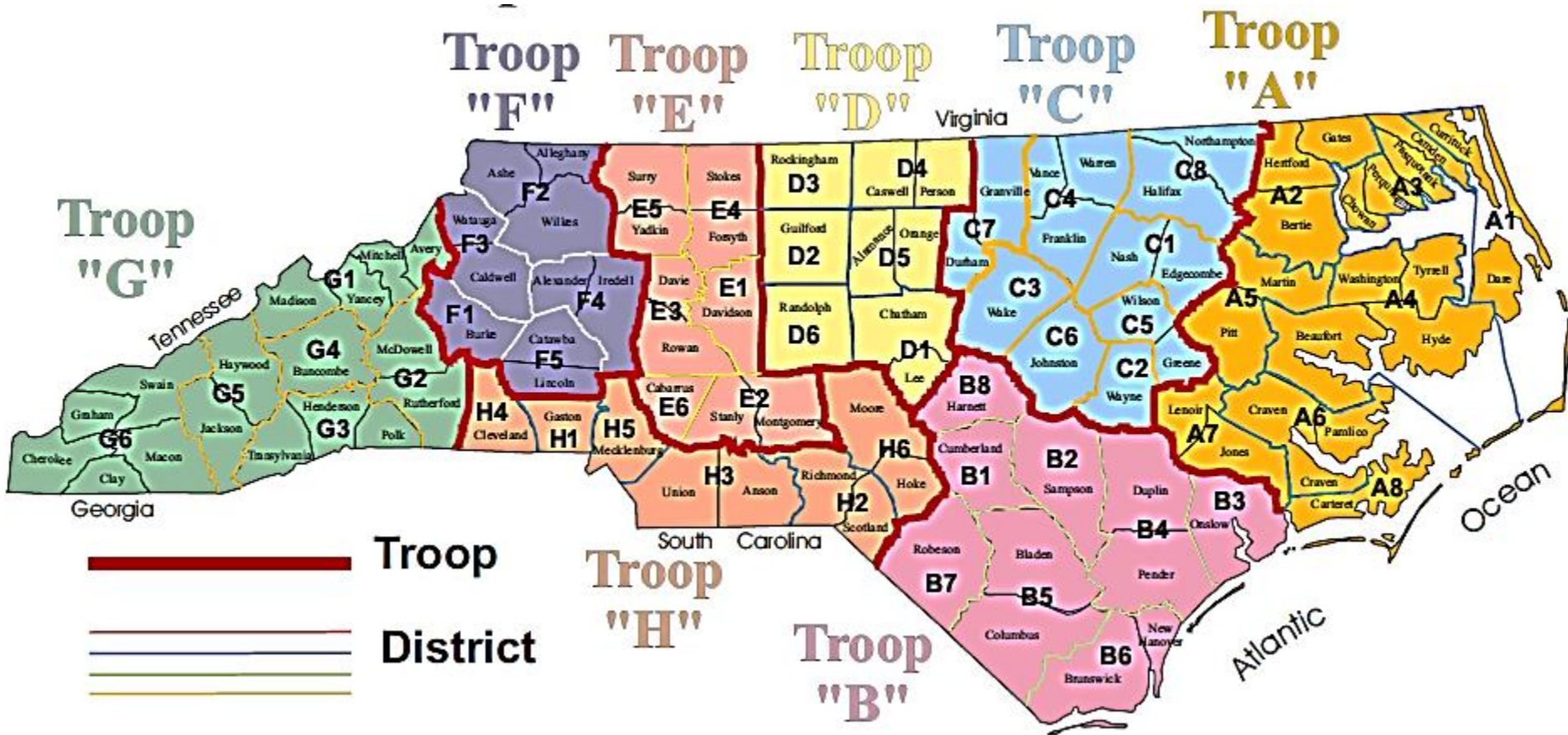
In 2014, Troopers:

- Issued 345,173 speeding tickets
- Arrested 20,190 DWI offenders
- Investigated 105,630 accidents



Source: NC DPS

NC State Highway Patrol



NC State Highway Patrol

Professional Standards

- Internal Affairs
- Inspections
- Medical Services
- Personnel, Benefits
- Recruitment, Performance, Promotion
- Research and Planning



Source: NC DPS

NC State Highway Patrol

Highway Patrol Training Academy

Located at the Governor Morehead School for the Blind since 1976

- 9 buildings
- 317 acres
- Driving track
- Heliport

Basic School

- 66 cadets, plus alternates
- 29 weeks, 1,305 hours
- \$2 million per class
- New trooper equip. \$48,3826

In-service Training

Certification and Specialized Training



Source: NC DPS

NC State Highway Patrol

Support Services - Logistics

- Mechanics and Auto Body Shop
- Radio Engineers
- Motor Fleet
- Equipment, supplies, uniforms

Support Services – Technical Services Unit

- All SHP computer systems
- Laptop and desktop support
- VIPER



Source: NC DPS

NC State Highway Patrol

VIPER

Voice Interoperability Plan for Emergency Responders

- Allows inter-agency communication during emergencies
- State/local Partnership
 - State pays for towers
 - Locals pay for their radios
- 240 Tower sites (213 constructed)
- 65,388 users from 260 agencies
- Cost to date - \$174.5 million (\$110.1 federal; \$64.5 State)

Additional Funding to Complete - \$49 million

- \$26 m for tower completion
- \$23 m for P-25 technology upgrade



NC State Highway Patrol

Vehicles

Enforcement vehicles: 1,622

Enforcement spares: 126

Training vehicles: 87

192 support vehicles: 192

Total Fleet: 2,027

Charger Cost: \$26,199

Taxes and Tags: \$786

Upfit* Costs: \$1,301

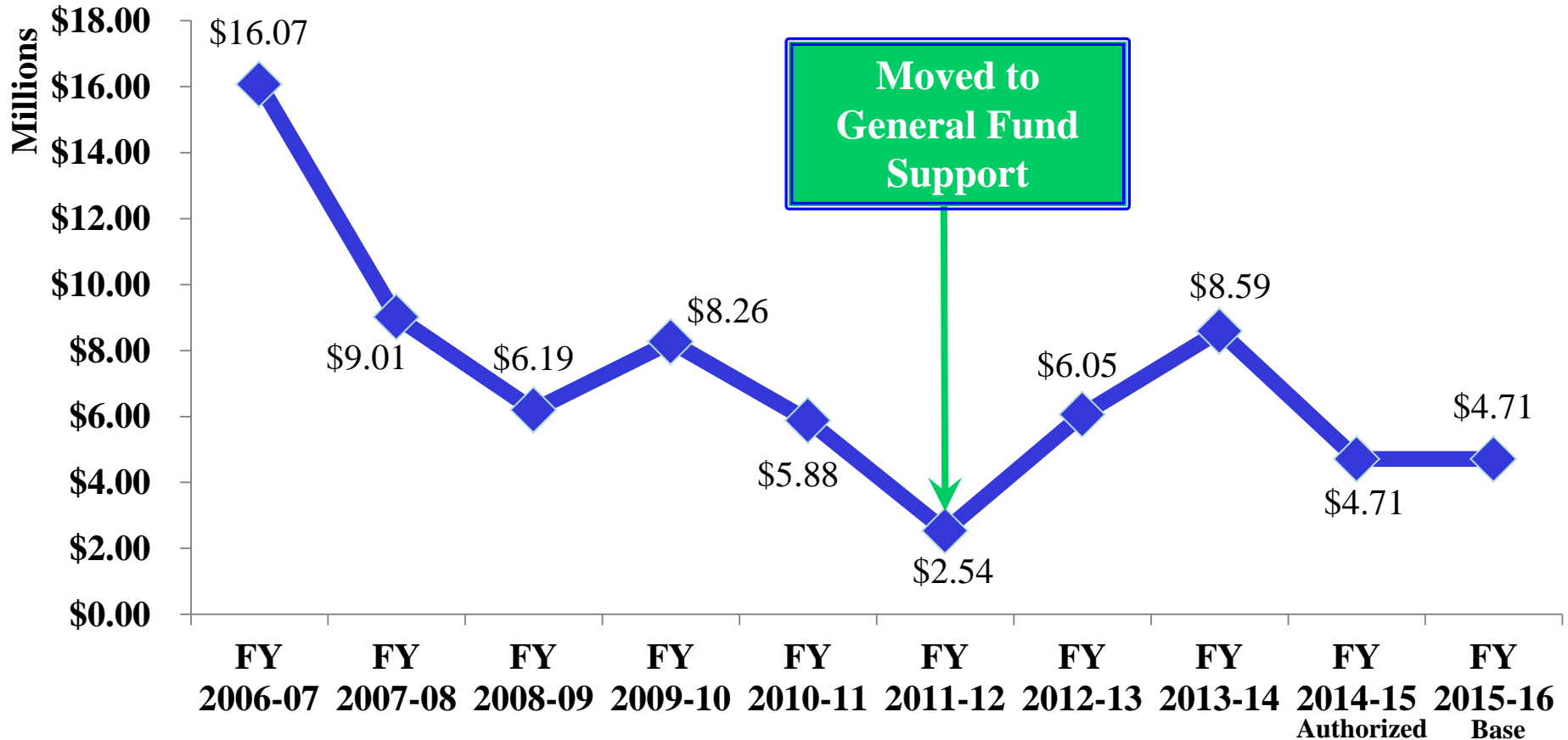
Total Cost: \$28,286



***Upfit costs do not include mobile computers or in-car cameras**

NC State Highway Patrol

State Highway Patrol Vehicle Expenditures Since FY 2004-05

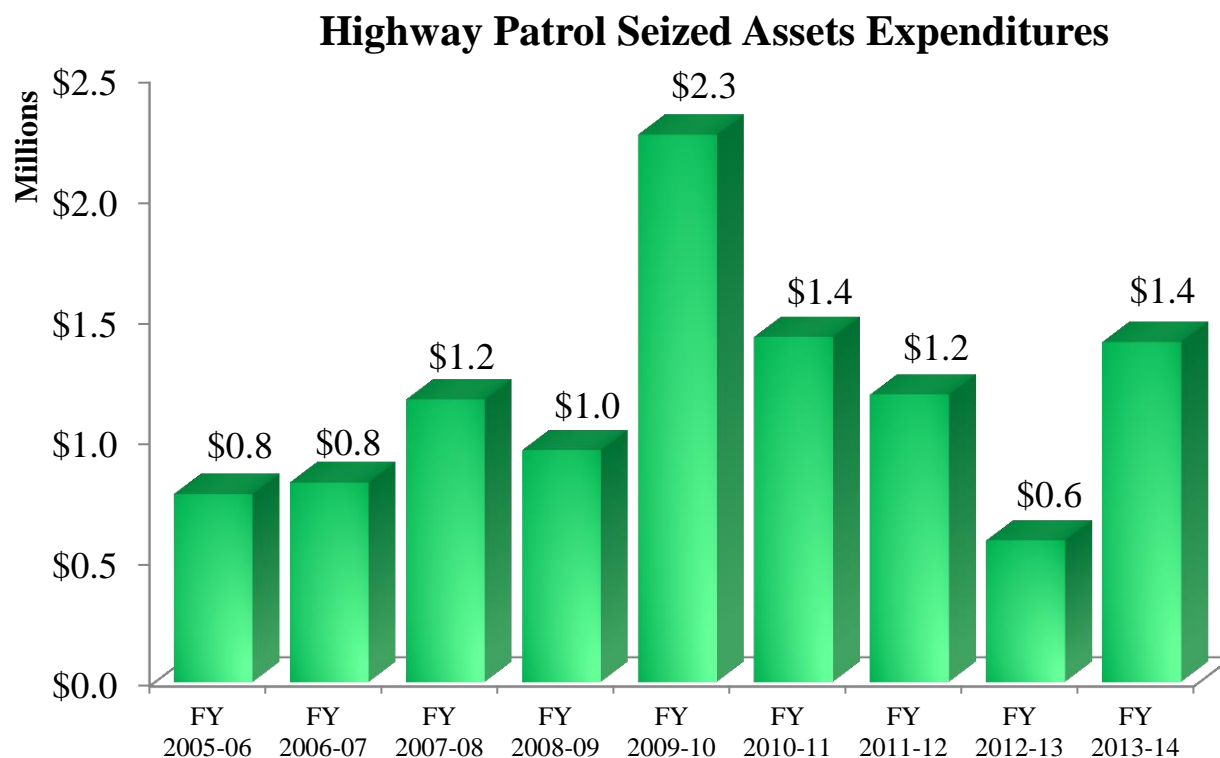


Source: DPS SHP, February 2014; NCIBIS Worksheet I, 03/03/2015

NC State Highway Patrol

Seized Assets

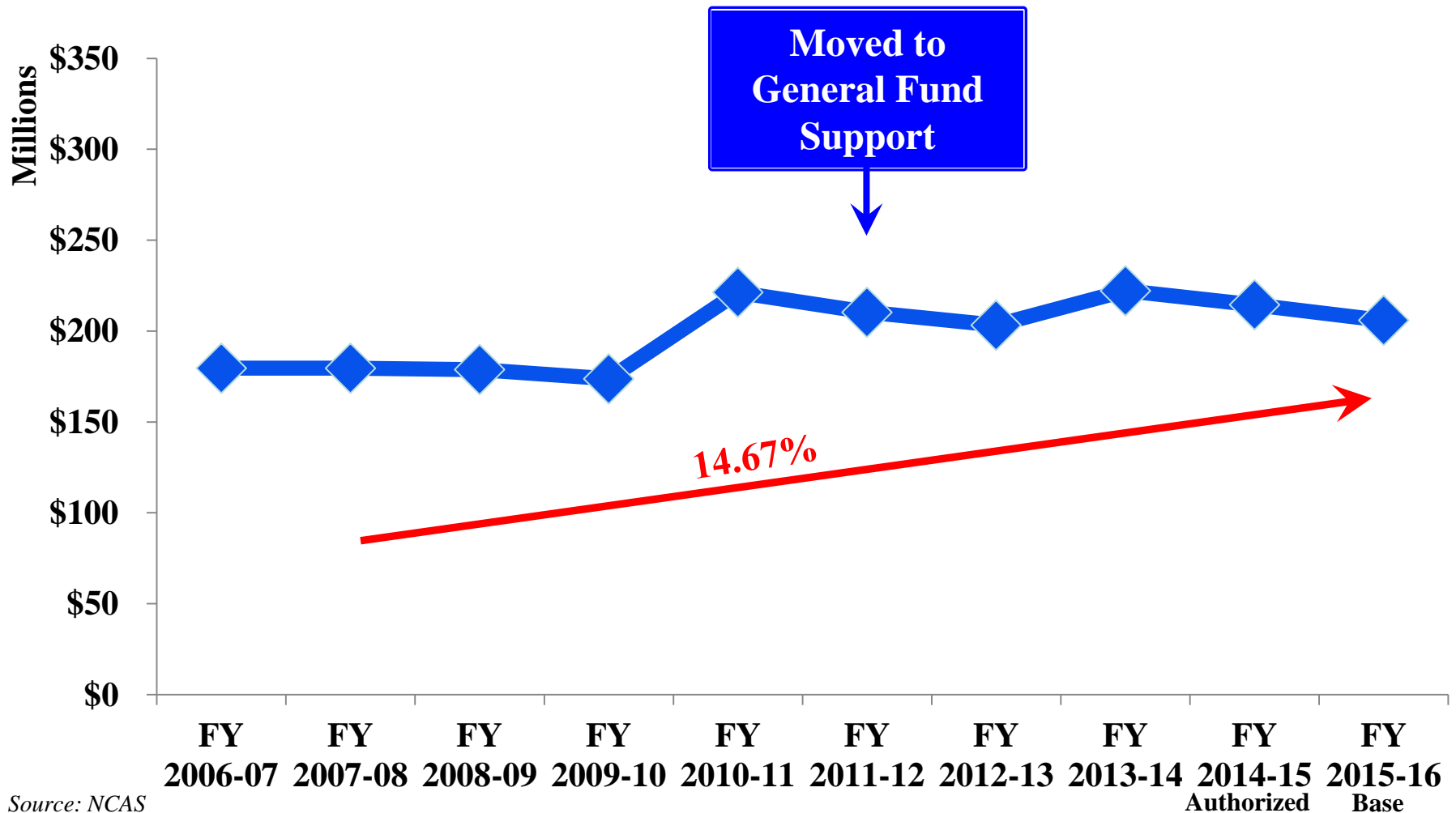
- Weapons and armor
- Phones and radios
- Training
- Video Cameras



Source: NCAS

NC State Highway Patrol

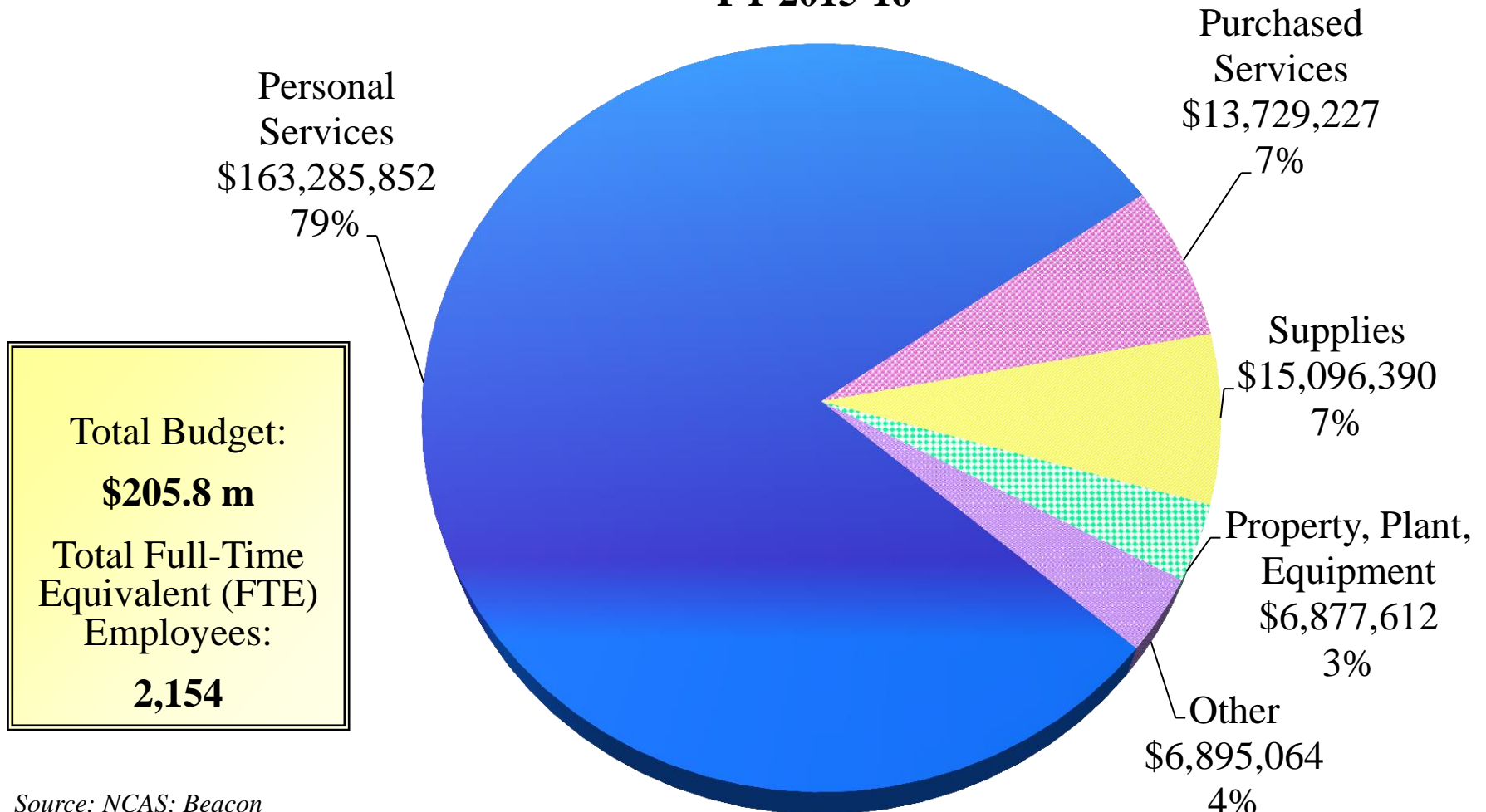
Actual Expenditures Since FY 2006-07



Source: NCAS

NC State Highway Patrol

General Fund Base Budget FY 2015-16



Source: NCAS; Beacon

SHP: Recent Budget Actions

2013 Budget (S.L. 2013-360)

Department-wide Consolidation Efficiencies	(\$5,000,000) R
Budget Vacant Trooper Positions	\$2,505,713 R
SHP Fuel	\$3,677,292 R
SHP Aircards	\$626,000 R
SHP Mobile Computers	\$1,050,640 NR
SHP Communication Center Consolidation	(\$1,662,707) R
SHP Aviation	(\$901,900) R
SHP Consolidation of Technology Services Functions	(\$506,517) R
SHP Administration Reduction	(\$700,000) R
SHP Accreditation Unit Elimination	(\$402,978) R
SHP Support Positions	(\$772,853) R
SHP Traffic Safety Information Officers	(\$527,288) R
VIPER Operations and Maintenance	\$2,825,471 R

SHP: Recent Budget Actions

2013 Budget (S.L. 2013-360) (continued)

SHP VIPER Technology Upgrade	\$25,000,000 NR
VIPER Tower Construction (2 nd Year)	\$7,000,000 R
Continued the Step Increase Freeze	
Total net FTE eliminated: 54.0	

2014 Budget (S.L. 2014-100)

DPS Department-wide Management Flexibility Reserve	(\$6,319,863) NR
\$1,000 salary increase for all permanent FTE	\$30,219,820 R
Experience-based Step-Increase	\$1,834,633 R
SHP Vacant Trooper Positions	(\$1,781,325) R
SHP Uniforms	\$863,384 R
Troopers' Association Caisson Unit	\$100,000 NR
Total net FTE eliminated: 35.0	

Section 16B.5 required DPS to use \$2.9 million of funds available to purchase VIPER radios for the Highway Patrol.

Questions



State Bureau of Investigation



SBI Transfer

Consolidate major State law enforcement divisions under one agency:

- Shared resources
- Purchasing efficiencies
- Coordination and cooperation



SBI Transfer

Changes to SBI Director

Previous Law

- Appointed by the Attorney General (AG)
- Served at pleasure of the AG
- No set terms
- Conducted most investigations “upon the request of” or “under the direction of” the Governor

S.L. 2014-100, Sec. 17.1

- Nominated by the Governor and confirmed by the NCGA
- Can only be removed for cause by the Governor
- Eight-year terms
- Conducts most investigations “at the request of” or “under the direction of” the Governor

SBI Transfer

Savings and Efficiencies

Information Technology

- Separated Division of Criminal Information from SBI and put it directly under Commissioner of Law Enforcement

District Offices

- Required consolidation of Alcohol Law Enforcement and SBI district offices by October 1 (except Asheville, which is required by July 1, 2015)

Bulk and Coordinated Purchasing

- Type II transfer of SBI left the budget under the control of the Secretary of Public Safety, allowing for better oversight and coordination of expenditures for supplies and equipment

Total FY 2014-15 Savings: \$1.2 million

SBI Transfer

Jurisdictional Boundaries



G.S. 20-49 and 20-49.1

- Motor Vehicle Laws
- Crimes in their presence
- When called in by other law enforcement agencies



G.S. 143B-900

- Same as a Raleigh police officer or Wake County deputy sheriff on property owned, leased, or maintained by the State in the city of Raleigh or Wake County



G.S. 143B-919

- Hazardous waste dumping
- Communicating threats
- Arson (G.S. 58-79-5)
- Gambling and Lottery
- Drugs (G.S. 90-113.5)
- Lynchings
- Computer crimes
- Child sex abuse in daycares
- Riots
- Explosives
- Local investigations



G.S. 18B-500

- Statewide jurisdiction over any criminal offense
- Primary responsibility is ABC and Lottery

SBI Transfer

Other Changes

Moved ALE under the SBI

- G.S. 143B-928: *...the Alcohol Law Enforcement branch is a separate and discrete branch of the State Bureau of Investigation.*

Clarified the ALE mission

- G.S. 18B-500: *the primary responsibility of an agent shall be enforcement of the ABC and lottery laws.*

SBI personnel are the sole responsibility of the SBI Director

- G.S. 143B-927: *The Director shall be responsible for making all hiring and personnel decisions of the Bureau.*

SBI Transfer

Progress Reports

- Interim – January 1, 2015
- Interim – April 1, 2015
- Final – October 1, 2015



State Bureau of Investigation

B.W. Collier, Acting Director

Original Jurisdiction (G.S. 143B-919):

- Election fraud
- Lynchings
- Computer crimes against children
- Child sex abuse in daycares
- Explosives
- Riots
- Hazardous waste dumping
- Communicating threats
- Arson (G.S. 58-79-5)
- Gambling and Lottery
- Drugs (G.S. 90-113.5)

Assistance to law enforcement at their request

SBI Divisions:

- Administrative Services
- Field Operations
- Special Operations
- Alcohol Law Enforcement

Total Budget:

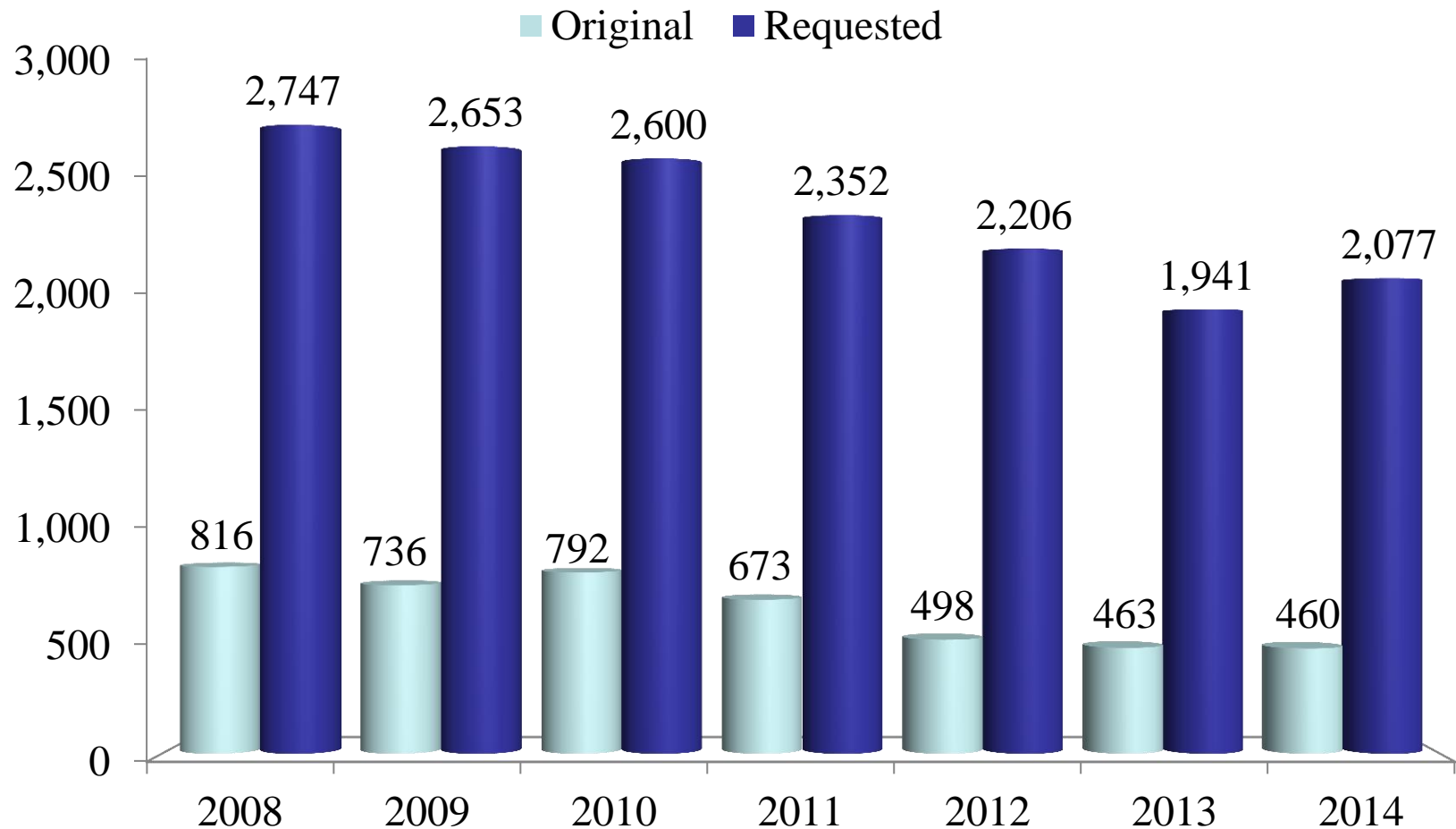
\$52.9 m

Total FTE:

566.0

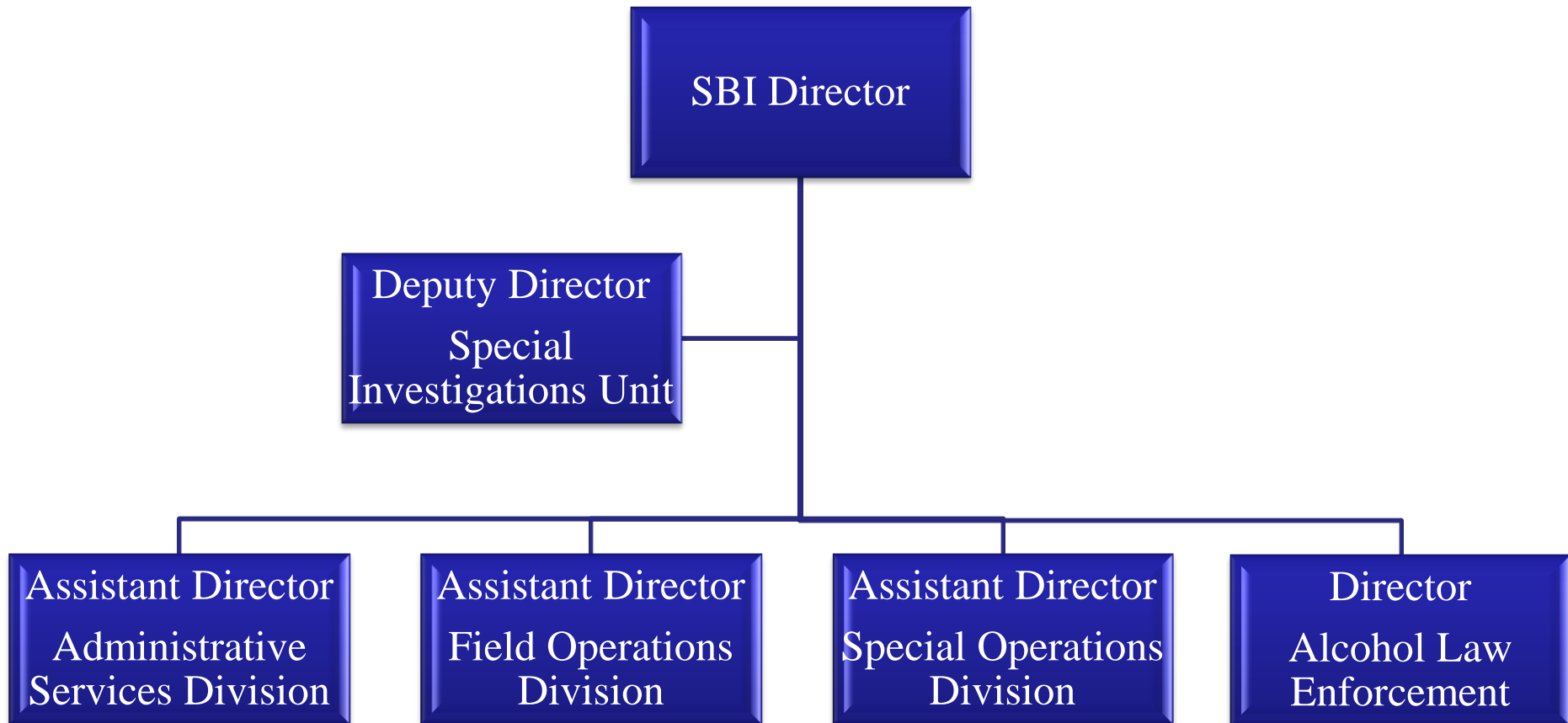
State Bureau of Investigation

SBI Origin of Investigation



Source: SBI

State Bureau of Investigation



State Bureau of Investigation

Administrative Services Division

- Training and investigative support
- Accreditation and career development
- Business and logistics
- Case Records Management

49 FTE



Source: FTE – Beacon BO149, 03/08/2015

State Bureau of Investigation

Recruitment and Training (11 FTE)

- Minimum Bachelor's degree
- Agents must have or obtain law enforcement certification
- 75% of new agent hires already have Basic Law Enforcement Training (BLET)
- All new agents go to SBI Academy
 - 18 weeks/ 720 hours
 - Salemburg Training Academy
- One year as agent trainee
- In-service training as required by CJTS and SBI



State Bureau of Investigation

Alcohol Law Enforcement

118 FTE

Created 1977

G.S. 18B-500

(c)...The primary responsibility of an agent shall be enforcement of the ABC laws and lottery laws.

Statewide jurisdiction:

- ABC laws
- Lottery laws
- Bingo
- Gambling
- Boxing



State Bureau of Investigation

Field Operations Division

179 FTE

Eight District Offices:

- Each has Special Agent in Charge (SAC), Assistant SAC, special agents, an administrative secretary and an office assistant
- Investigate original jurisdiction cases in their district
- Provide assistance to local law enforcement

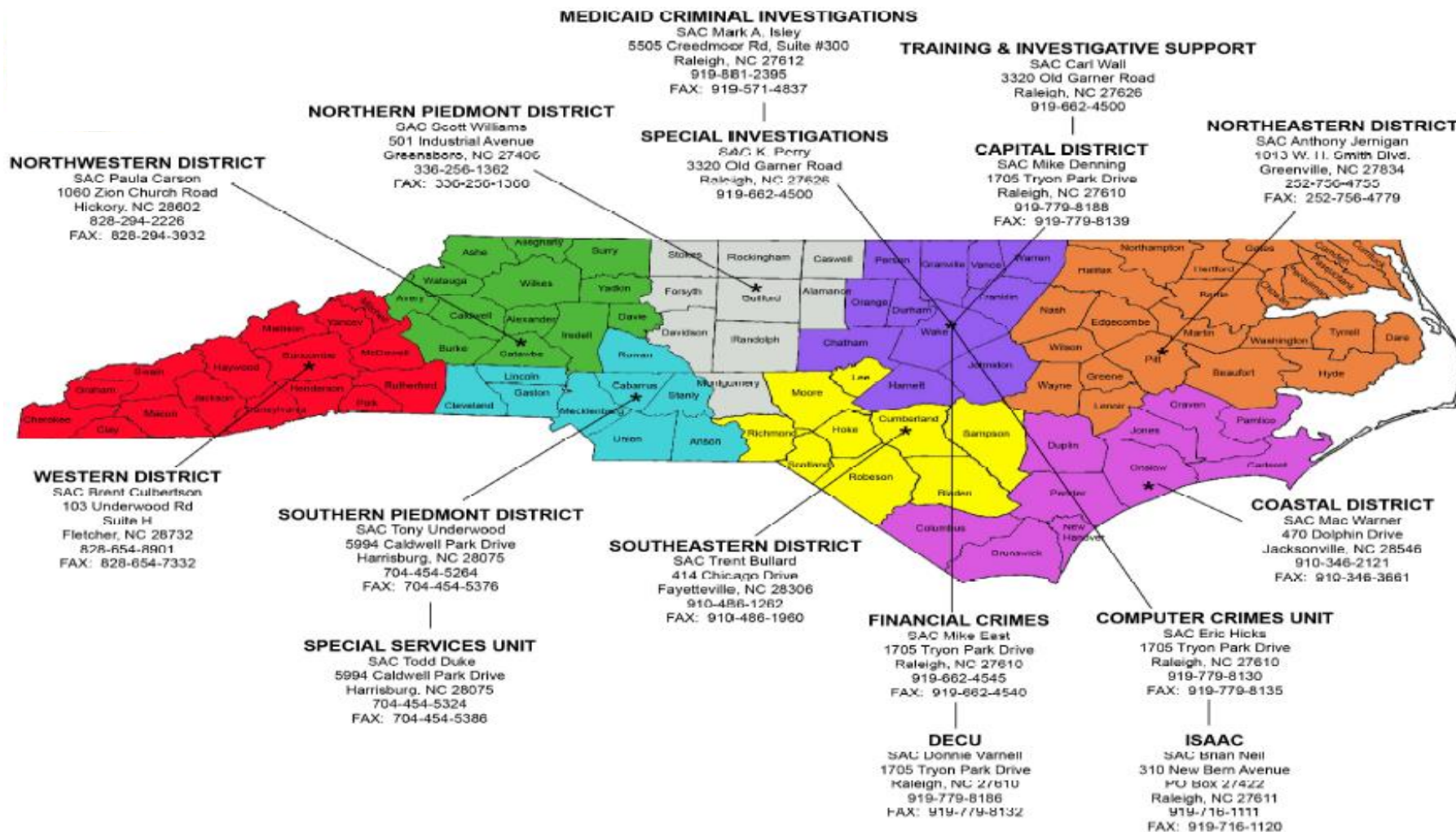
Special Investigation Units:

- Fire/Arson
- Crime Scene Search
- Polygraph



Source: FTE – Beacon BO149, 03/08/2015

State Bureau of Investigation



Revised: January 12, 2015

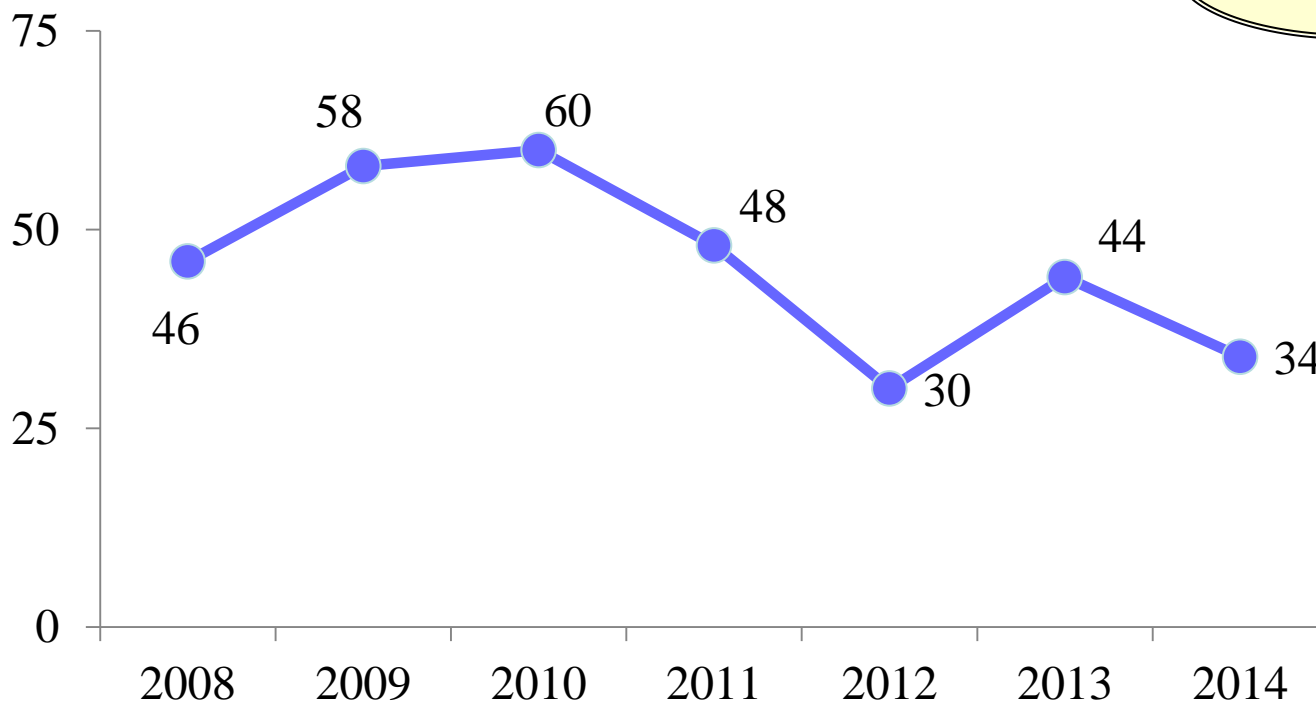
State Bureau of Investigation

Special Investigations Unit

Investigates public corruption and government misconduct and internal affairs for the SBI.

Public Corruption Investigations

5 FTE



Source: FTE – Beacon BO149, 03/08/2015

State Bureau of Investigation

Special Operations Division

Air Wing Unit (4 FTE)

Aerial surveillance, marijuana eradication, investigative photography and reconnaissance, prisoner transport

Computer Crimes Investigations (16 FTE)

Statewide coordination and investigation of computer and internet crimes primarily involving children

Diversion and Environmental Crimes Unit (16 FTE)

Diversion of controlled drugs by health care professionals and environmental crimes



Source: FTE – Beacon BO149, 03/08/2015

State Bureau of Investigation

Special Operations Division (continued)

Financial Crimes Unit (14 FTE)

Complex white collar crimes including embezzlement and corporate malfeasance.

Intelligence and Information (22 FTE)

Includes ISAAC and the Criminal Intelligence Unit.

Threat Assessment and State Property Theft (2 FTE)

Assesses threats against government officials and investigates reports of theft of State property.



Source: FTE – Beacon BO149, 03/08/2015

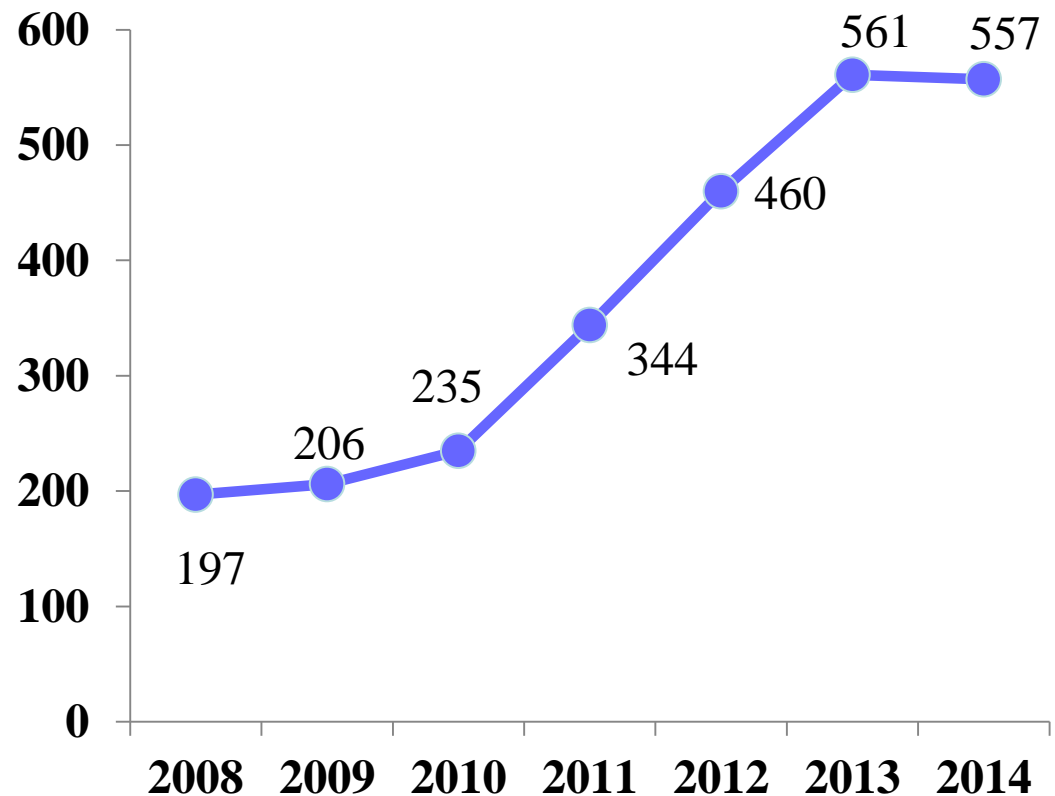
State Bureau of Investigation

Special Operations Division (continued)

Special Services and Intelligence Units (20 FTE)

- Clandestine lab response
- Crises negotiation
- Fugitive arrest and apprehension
- Special Response Team
- Weapons of mass
destruction/hazardous devices

Meth Lab Responses



Source: DOJ; FTE from Beacon BO149

State Bureau of Investigation

Special Operations Division (continued)

Criminal Information and Identification (72 FTE)

- Background checks
- Statewide Automated Fingerprint Identification System (SAFIS)
- Criminal Information Network (DCIN)
- Sex Offender Registry
- Uniform Crime Reporting Program (UCR)



Source: FTE – Beacon BO149, 03/08/2015

State Bureau of Investigation

Background Checks

SBI conducts background checks for:

- Employment
- Licensure
- Adoption
- Concealed weapons
- Law enforcement



Fees charged to everyone except law enforcement (G.S. 143B-930)

- 104,032 background checks for 5,117 entities in FY 2013-14
- 117,853 background checks for concealed carry permits in FY 2013-14
- Total receipts: \$8.7 million

Source: SBI

State Bureau of Investigation

Criminal Information Network

G.S. 143B-902 Powers and duties of DPS with respect to criminal information

Requires DPS to collect information and share it with law enforcement

Criminal Information Network (CIN) (G.S. 143B-905)

- Central law enforcement hub for 20,000 sworn law enforcement officers statewide
- Access to State and federal crime information
- Operates 24 hours a day, 365 days a year

Fees authorized (G.S. 143B-905(d))

- 905 agencies with 27,689 end users in FY 2013-14
- Monthly fee - \$12 (mobile) or \$25 (desktop) per device
- Generated \$3.1 million in FY 2013-14



State Bureau of Investigation

Serves over 20,000 sworn law enforcement officers using the following systems:

- Law Enforcement Message Switch (LEMS)
- Omnixx Force, Trainer, Charts, Alerts, and DMXLive
- Statewide Automatic Fingerprint Identification System (SAFIS)
- Computerized Criminal History (CCH)
- Sex Offender Registry
- Concealed Handgun Permits (CHP)
- EVOLVE
- Expungement
- Recovered Vehicles
- Crime Analysis Management System (CAMS)
- Crime Reporting
- Traffic Stops
- NC-DEx

State Bureau of Investigation

Seized and Forfeited Assets

Federal program subject to federal regulations.

Funds can be used for:

- Investigations
- Training
- Facilities
- Equipment
- Travel
- Other

Funds can NOT be used for:

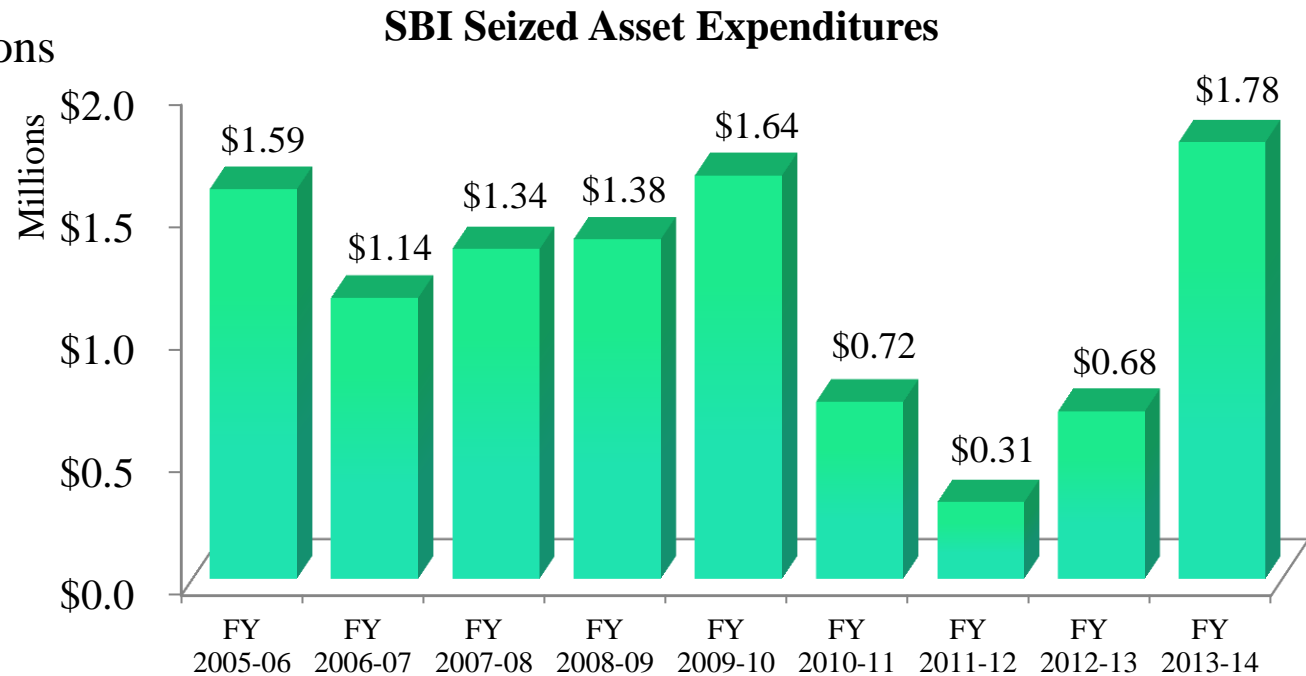
- Salaries
- Scholarships
- Food and beverages
- Hospitality suites
- Illegal activities



State Bureau of Investigation

SBI Seized Assets

- Vehicles
- Phones
- Computers and software
- Undercover operations



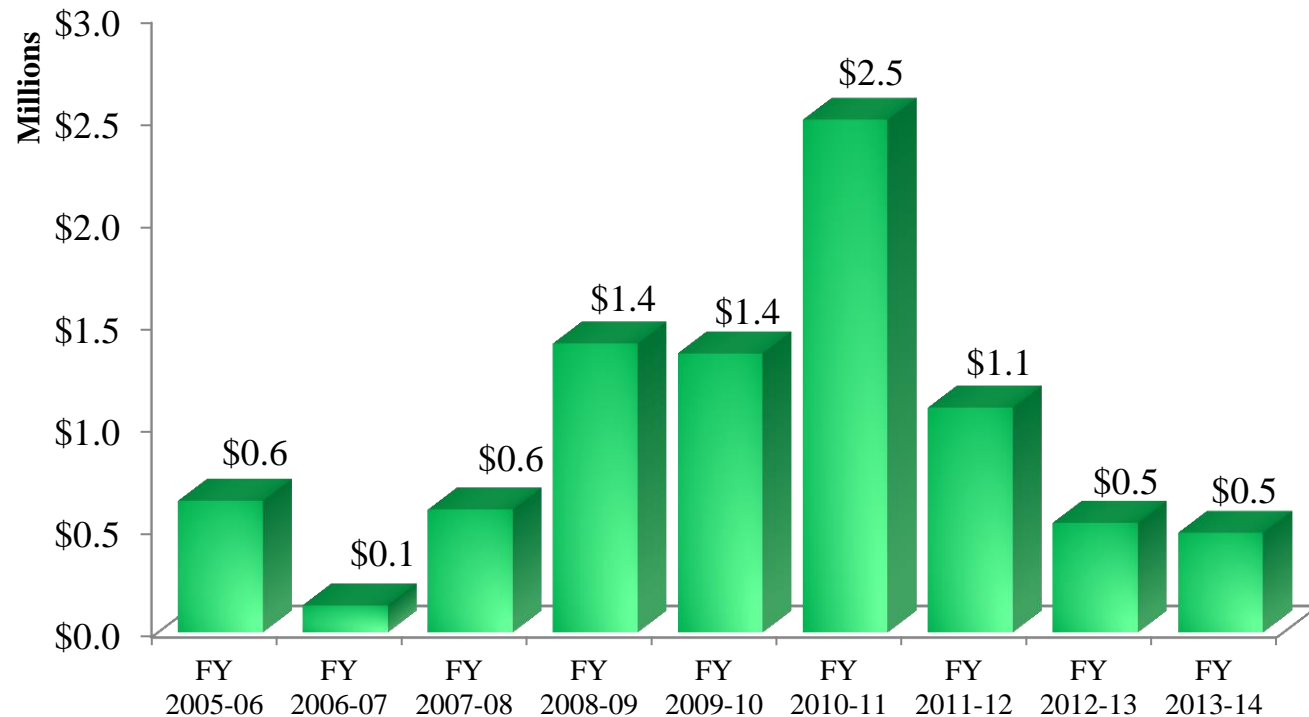
Source: NCAS Budget History

State Bureau of Investigation

ALE Seized Assets

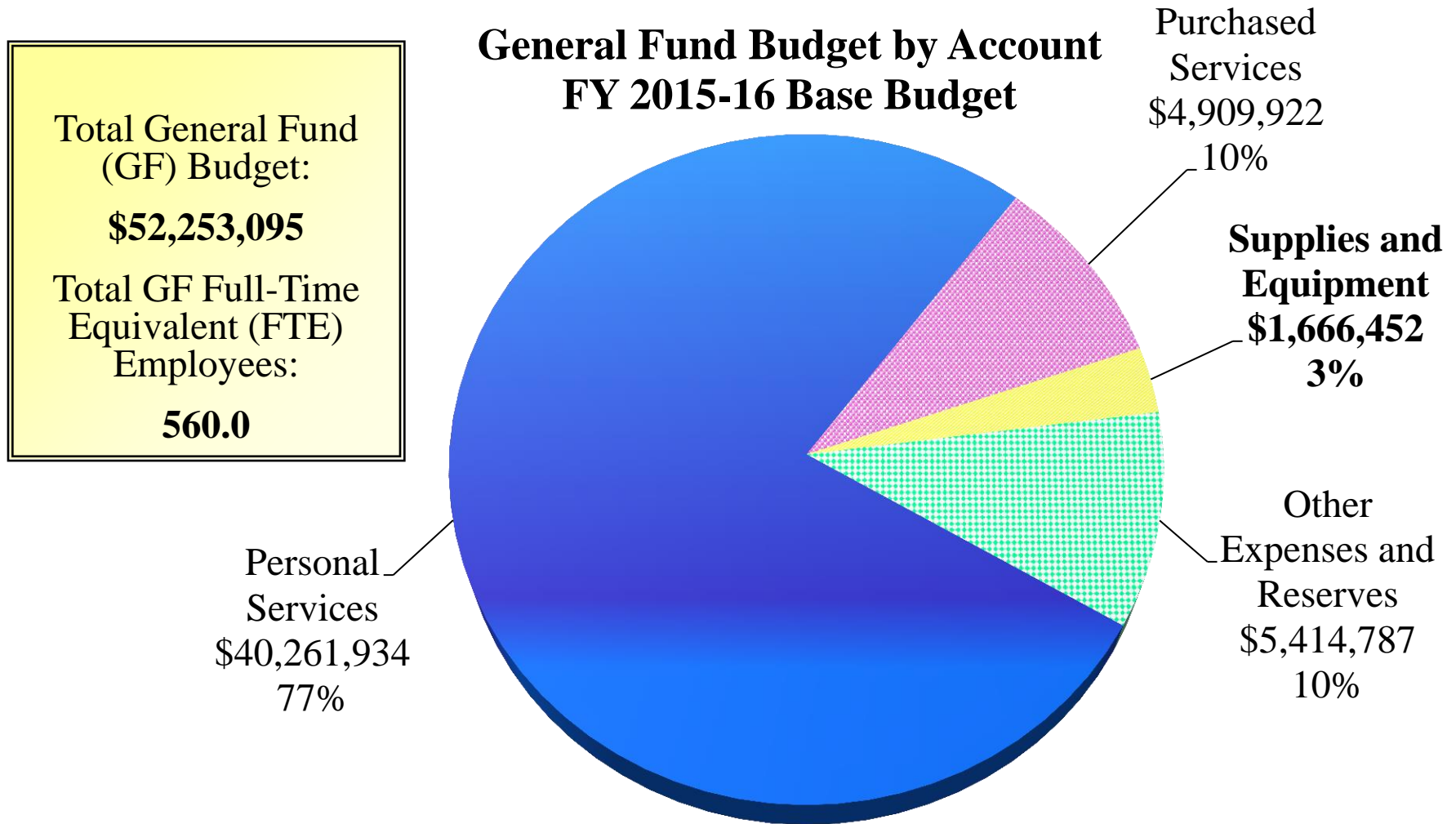
- Weapons and armor
- Ammunition
- Gas
- Vehicles

ALE Seized Assets Expenditures



Source: NCAS Budget History

State Bureau of Investigation



Source: NCIBIS, Worksheet I, 03/03/2015

State Bureau of Investigation

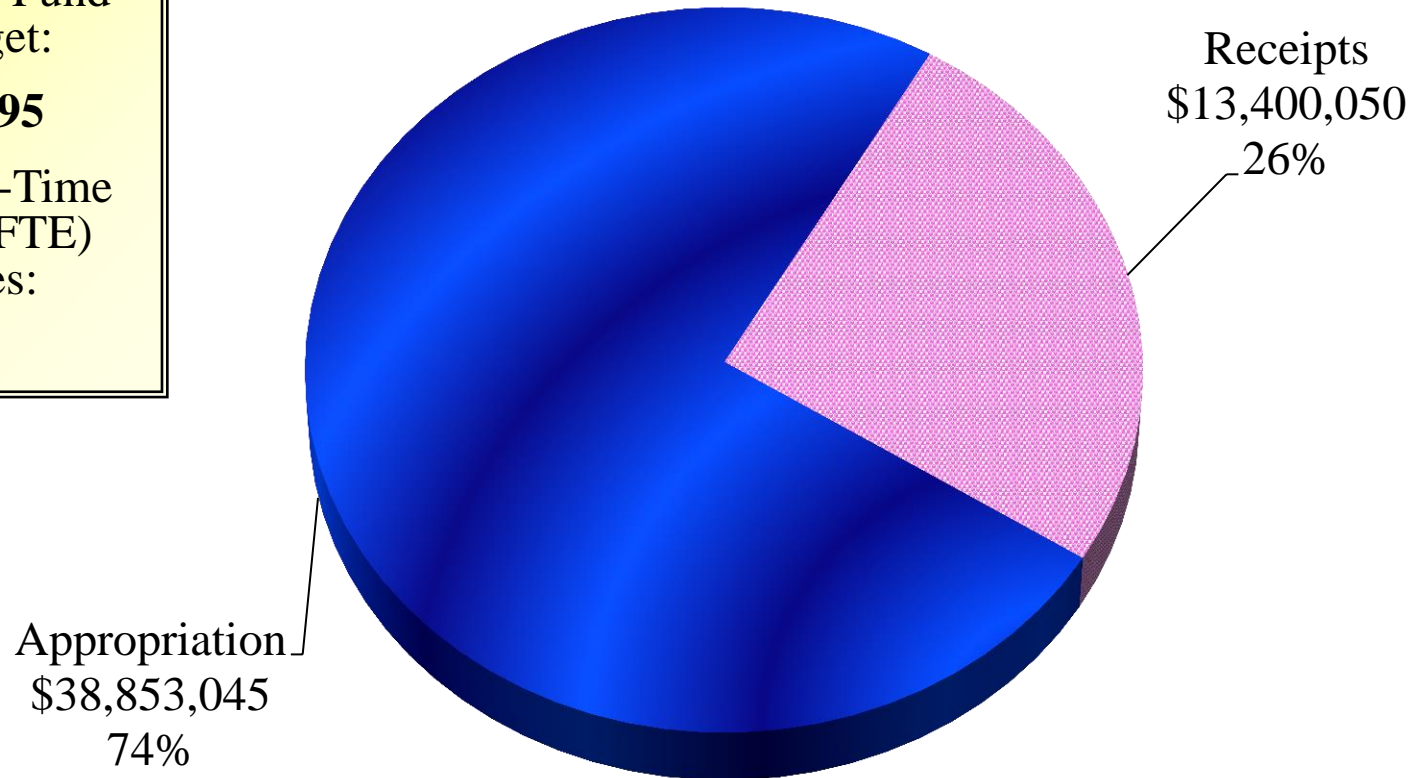
**General Fund Budget by Source
2015-16 Base Budget**

Total General Fund
(GF) Budget:

\$52,253,095

Total GF Full-Time
Equivalent (FTE)
Employees:

560.0



Source: NCIBIS, Worksheet I, 03/03/2015

SBI: Recent Budget Actions

2013 Budget (S.L. 2013-360)

DOJ Department-wide Management Flexibility Reserve (\$1,700,000) R

ALE Operating Reduction (\$1,750,000) R

- **Sec. 17.6** moved the State Crime Lab out of the SBI

2014 Budget (S.L. 2014-100)

DPS Department-wide Management Flexibility Reserve (\$6,319,863) NR

\$1,000 salary increase for all permanent FTE \$30,219,820 R

Consolidation Savings Reduction (\$1,000,000) R

ALE/SBI District Office Consolidation (\$231,439) R

Restoration of 13 ALE Positions \$724,454 R

- **Sec. 17.1** moved the SBI to DPS and placed ALE under the Director of the SBI.

Questions

